

## DETTAGLI

- Foderato
- 2 tasche
- 8 bottoni
- Fascette regolabili

## COLORE

000 Nero

## TESSUTO

95% poliestere  
5% elasthan  
220 g / m<sup>2</sup>



## TAGLIE

XS ÷ XXL  
Regular Fit

Le misure indicate si riferiscono alle taglie **S** per i capi femminili, **L** per i capi maschili. Per i capi a taglia unica le misure indicate sono effettive.

## COLORI DISPONIBILI



000 Nero

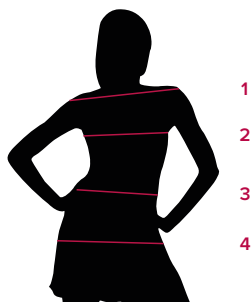
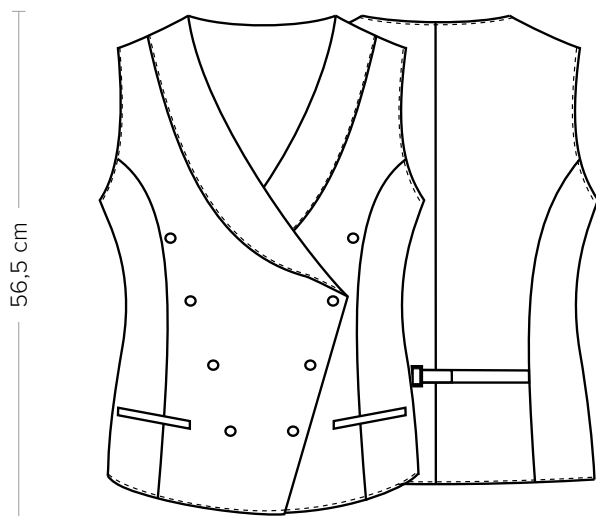
TABELLE TAGLIE  
E CORRISPONDENZE

TABELLA ST-E3 REGULAR FIT							
TAGLIA	XS	S	M	L	XL	XXL	XXXL
1 - SPALLE	35	36	37	38	40	42	43
2 - CIRCONFERENZA TORACE	80-84	85-90	91-96	97-102	103-110	111-118	119-125
3 - CIRCONFERENZA VITA	99-83	84-89	90-95	96-100	101-108	109-116	117-124
4 - CIRCONFERENZA BACINO	99-83	84-89	90-95	96-100	101-108	109-116	117-124

**GUIDA ALLE TAGLIE** **1)** Prendere le misure anatomiche (corpo con abbigliamento intimo) senza stringere mantenendo ben teso il metro. Nota: nel caso vogliate indossare dei camici già con dell'abbigliamento sotto prendete le misure già abbigliati. **2)** Nel caso tra le misure prese vi fosse una misura a cavallo fra 2 taglie vi consigliamo di prendere quella più grande. **3)** Le misure della tabella sono espresse in centimetri.



## DETAILS

- Lined
- 2 pockets
- 8 buttons
- Adjustable buckle

## COLOURS

000 Black

## FABRIC

95% polyester  
5% elastane  
220 g / m<sup>2</sup>

## SIZES

XS ÷ XXL  
Regular Fit



The measures indicated refer to sizes **S** for women, **L** for men. For one-size-fits-all garments, the measurements indicated are effective.

## AVAILABLE COLOURS



000 Black

## SIZE TABLES AND CORRESPONDENCES

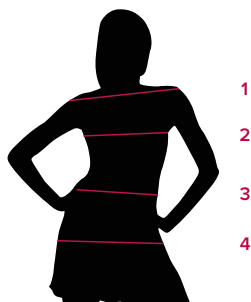


TABLE ST-E3 REGULAR FIT							
SIZE	XS	S	M	L	XL	XXL	XXXL
1 - SHOULDERS	35	36	37	38	40	42	43
2 - CHEST CIRCUMFERENCE	80-84	85-90	91-96	97-102	103-110	111-118	119-125
3 - WAIST CIRCUMFERENCE	99-83	84-89	90-95	96-100	101-108	109-116	117-124
4 - HIPS CIRCUMFERENCE	99-83	84-89	90-95	96-100	101-108	109-116	117-124

**SIZE GUIDE** **1)** Take the anatomical measurements (body with underwear) without tightening, keeping the measuring tape taut. Note: in case you want to wear of the gowns already with the clothing underneath take the measurements already dressed. **2)** If there is a measure between 2 sizes between the measurements taken, we advise you to take the bigger one. **3)** The measurements in the table are expressed in centimeters.