

DETTAGLI

- 2 tasche
- 2 tasche sul retro
- 1 bottone
- Chiusura zip
- Passanti cintura

COLORE

J000 Jeans nero

TESSUTO

75% cotone
23% poliestere
2% elastan
210 g / m²



TAGLIE

XS ÷ 4XL
Slim Fit

Le misure indicate si riferiscono alle taglie **S** per i capi femminili, **L** per i capi maschili. Per i capi a taglia unica le misure indicate sono effettive.

Disegnato per unire stile e versatilità, il pantalone Iride in black denim esalta la silhouette con un fit aderente, confermandosi come passe-partout per vari settori, e scelta ideale per le clienti più modaiole. Presenta vita regolare, gamba skinny, chiusura con zip, bottone a chiodo e rivetti in ottone, tra cui la "G" applicata nella tasca posteriore con doppie impunture.

COLORI DISPONIBILI



J000 Jeans nero

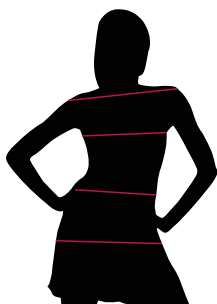
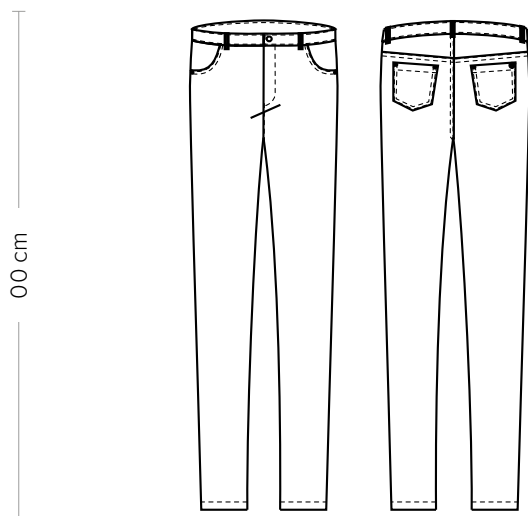
TABELLE TAGLIE
E CORRISPONDENZE1
2
3
4

TABELLA ST-GP2 SLIM FIT							
TAGLIA	XS	S	M	L	XL	XXL	XXXL
1 - SPALLE							
2 - CIRCONFERENZA TORACE							
3 - CIRCONFERENZA VITA	70-76	77-81	82-87	88-94	95-101	102-109	110-117
4 - CIRCONFERENZA BACINO	80-86	87-91	92-97	98-104	105-111	112-119	120-127

GUIDA ALLE TAGLIE **1)** Prendere le misure anatomiche (corpo con abbigliamento intimo) senza stringere mantenendo ben teso il metro. **Nota:** nel caso vogliate indossare dei camici già con dell'abbigliamento sotto prendete le misure già abbigliati. **2)** Nel caso tra le misure prese vi fosse una misura a cavallo fra 2 taglie vi consigliamo di prendere quella più grande. **3)** Le misure della tabella sono espresse in centimetri.



DETAILS

- 2 side pockets
- 2 rear pockets
- 1 button
- Zip fly
- Belt loops

COLOURS

J000 Black jeans

FABRIC

75% cotton
23% polyester
2% elastane
210 g / m²



SIZES

XS ÷ 4XL
Slim Fit

The measures indicated refer to sizes **S** for women, **L** for men. For one-size-fits-all garments, the measurements indicated are effective.

Designed to combine style and versatility, the Iride pants in black denim emphasise the silhouette with a close-fitting cut, proving themselves as passe-partout in different fields and as the ideal choice for the most fashionable customers. They feature a regular waist, skinny pant legs, a zip fly and a nail button. They also have brass rivets, including the 'G' one applied on the back pocket with double stitching.

AVAILABLE COLOURS



J000 Black jeans

SIZE TABLES AND CORRESPONDENCES

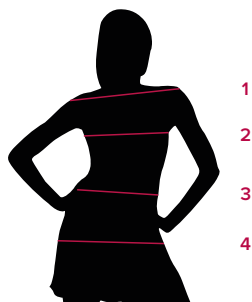


TABLE ST-GP2 SLIM FIT							
SIZE	XS	S	M	L	XL	XXL	XXXL
1 - SHOULDERS							
2 - CHEST CIRCUMFERENCE							
3 - WAIST CIRCUMFERENCE	70-76	77-81	82-87	88-94	95-101	102-109	110-117
4 - HIPS CIRCUMFERENCE	80-86	87-91	92-97	98-104	105-111	112-119	120-127

SIZE GUIDE **1)** Take the anatomical measurements (body with underwear) without tightening, keeping the measuring tape taut. Note: in case you want to wear of the gowns already with the clothing underneath take the measurements already dressed. **2)** If there is a measure between 2 sizes between the measurements taken, we advise you to take the bigger one. **3)** The measurements in the table are expressed in centimeters.