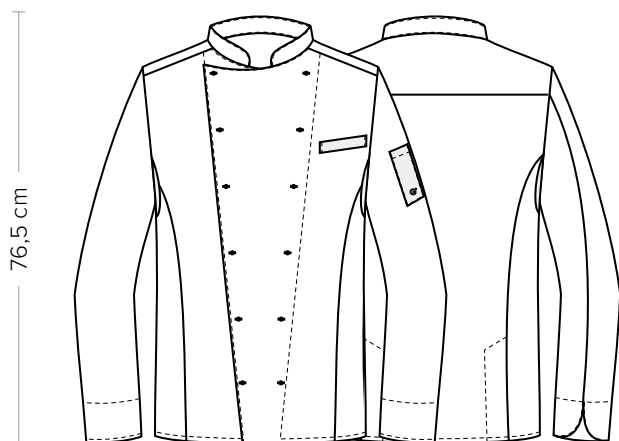


EXECUTIVE CHEF

CODICE ARTICOLO
18P08G050

Giblor's
italian work/life specialist



DETTAGLI

- Bottoni cuciti a mano
- Taschino sul petto
- Taschino portapenne sulla manica
- 2 spacchetti dietro
- Inserti in rete

COLORE

00 Bianco

TESSUTO

100% cotone
170 g / m²

TAGLIE

S ÷ 5XL
Slim Fit



Le misure indicate si riferiscono alle taglie **S** per i capi femminili, **L** per i capi maschili. Per i capi a taglia unica le misure indicate sono effettive.

La giacca Giblor's Executive Chef per eccellenza, amata dai personaggi più famosi al mondo per le sue caratteristiche inconfondibili, i 12 bottoni cuciti a mano e l'abbottonatura alta che va stringendosi in basso.

COLORI DISPONIBILI



00 Bianco

TABELLE TAGLIE
E CORRESPONDENZE

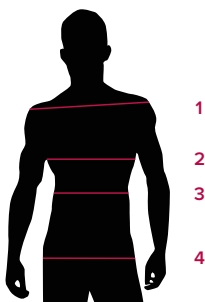


TABELLA ST-G1 SLIM FIT									
TAGLIA	XS	S	M	L	XL	XXL	XXXL	4XL	5XL
1 - SPALLE	44	45	46	47	49	51	53	55	57
2 - TORACE circonferenza	92-96	96-100	101-104	105-111	112-116	117-124	125-132	133-142	143-152
3 - VITA circonferenza	80-84	84-88	89-92	93-99	100-106	107-116	117-126	127-138	139-148
4 - BACINO circonferenza	93-97	97-101	102-105	106-111	112-117	118-125	126-133	134-143	144-153

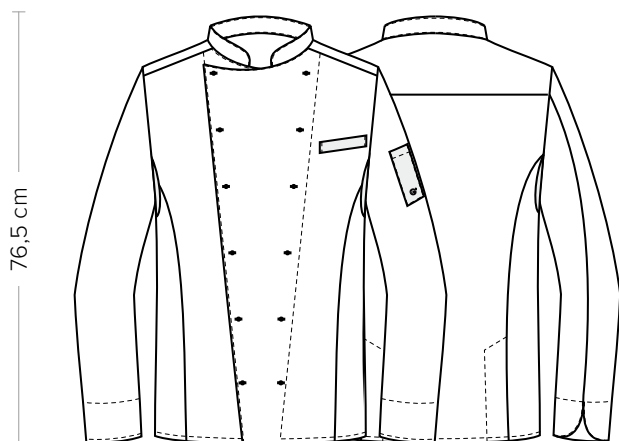
GUIDA ALLE TAGLIE **1)** Prendere le misure anatomiche (corpo con abbigliamento intimo) senza stringere mantenendo ben teso il metro. Nota: nel caso vogliate indossare dei camici già con dell'abbigliamento sotto prendete le misure già abbigliati. **2)** Nel caso tra le misure prese vi fosse una misura a cavallo fra 2 taglie vi consigliamo di prendere quella più grande. **3)** Le misure della tabella sono espresse in centimetri.

GIBLORS.COM

EXECUTIVE CHEF

ITEM CODE
18P08G050

Giblor's
italian work/life specialist



DETAILS

- Hand made buttons
- Breast pocket
- Pen pocket on sleeve
- 2 side vents
- Network fabric panels

COLOURS

00 White

FABRIC

100% cotton
170 g / m²

SIZES

S ÷ 5XL
Slim Fit



The measures indicated refer to sizes **S** for women, **L** for men. For one-size-fits-all garments, the measurements indicated are effective.

The Giblor's Executive Chef jacket par excellence, loved by the most famous personalities in the world for its unique features, the 12 hand made buttons and the high buttoning that tapers at the bottom.

AVAILABLE COLOURS



00 White

SIZE TABLES AND CORRESPONDENCES

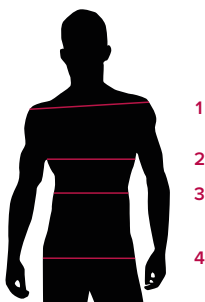


TABLE ST-G1 SLIM FIT									
SIZE	XS	S	M	L	XL	XXL	XXXL	4XL	5XL
1 - SHOULDERS	44	45	46	47	49	51	53	55	57
2 - CHEST circumference	92-96	96-100	101-104	105-111	112-116	117-124	125-132	133-142	143-152
3 - WAIST circumference	80-84	84-88	89-92	93-99	100-106	107-116	117-126	127-138	139-148
4 - HIPS circumference	93-97	97-101	102-105	106-111	112-117	118-125	126-133	134-143	144-153

SIZE GUIDE **1)** Take the anatomical measurements (body with underwear) without tightening, keeping the measuring tape taut. Note: in case you want to wear of the gowns already with the clothing underneath take the measurements already dressed. **2)** If there is a measure between 2 sizes between the measurements taken, we advise you to take the bigger one. **3)** The measurements in the table are expressed in centimeters.

GIBLORS.COM