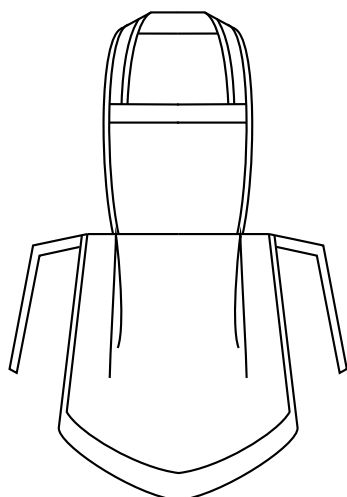


64 cm



**DETTAGLI**  
- Grembiule

**TAGLIE**  
Taglia unica

**COLORE**  
Q006 Bordeaux  
Q000 Nero

**TESSUTO**  
100% cotone  
120 g / m<sup>2</sup>



Il Grembiolino Elsa nasce come complemento dei nostri camici, ed è realizzato in un freschissimo policotone.

## COLORI DISPONIBILI

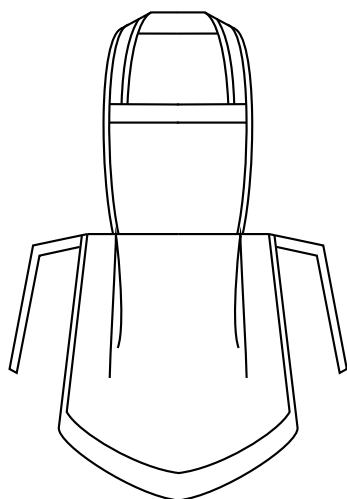


Q006 Bordeaux



Q000 Nero

64 cm



## DETAILS

- Apron

## SIZES

One size

## COLOURS

Q006 Burgundy  
Q000 Black

## FABRIC

100% cotton  
120 g / m<sup>2</sup>



The Elsa apron was designed as a complement to our coats and it is made of very fresh poly-cotton.

## AVAILABLE COLOURS



Q006 Burgundy



Q000 Black