

## DETTAGLI

- 2 tasche
- Abbottonatura nascosta

## TAGLIE

XS ÷ XXXL  
Slim Fit

## COLORE

Q013 Fucsia  
Q026 Verde acqua

## TESSUTO

100% cotone  
120 g / m<sup>2</sup>



Le misure indicate si riferiscono alle taglie **S** per i capi femminili, **L** per i capi maschili. Per i capi a taglia unica le misure indicate sono effettive.

## COLORI DISPONIBILI



Q013 Fucsia



Q026 Verde acqua

TABELLE TAGLIE  
E CORRISPONDENZE

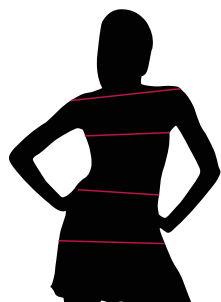
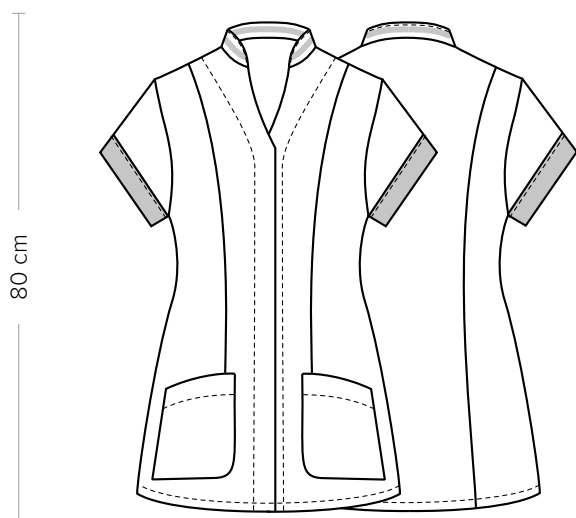


TABELLA ST-K1 SLIM FIT									
TAGLIA	XS	S	M	L	XL	XXL	XXXL	4XL	5XL
1 - SPALLE									
2 - CIRCONFERENZA TORACE	82-86	87-90	91-94	95-100	101-106	107-114	115-122	123-132	135-142
3 - CIRCONFERENZA VITA	71-75	76-79	80-83	84-90	91-97	98-106	107-116	117-126	127-136
4 - CIRCONFERENZA BACINO	92-96	97-100	101-104	105-110	111-116	117-124	125-132	133-142	143-152

**GUIDA ALLE TAGLIE** **1)** Prendere le misure anatomiche (corpo con abbigliamento intimo) senza stringere mantenendo ben teso il metro. **Nota:** nel caso vogliate indossare dei camici già con dell'abbigliamento sotto prendete le misure già abbigliati. **2)** Nel caso tra le misure prese vi fosse una misura a cavallo fra 2 taglie vi consigliamo di prendere quella più grande. **3)** Le misure della tabella sono espresse in centimetri.



## DETAILS

- 2 pockets
- Concealed buttoning

## SIZES

XS ÷ XXXL  
Slim Fit

## COLOURS

Q013 Fuchsia  
Q026 Aqua green

## FABRIC

100% cotton  
120 g / m<sup>2</sup>



The measures indicated refer to sizes **S** for women, **L** for men. For one-size-fits-all garments, the measurements indicated are effective.

## AVAILABLE COLOURS



Q013 Fuchsia



Q026 Aqua green

## SIZE TABLES AND CORRESPONDENCES

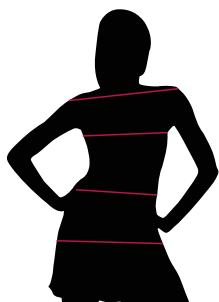


TABLE ST-K1 SLIM FIT									
SIZE	XS	S	M	L	XL	XXL	XXXL	4XL	5XL
1 - SHOULDERS									
2 - CHEST CIRCUMFERENCE	82-86	87-90	91-94	95-100	101-106	107-114	115-122	123-132	135-142
3 - WAIST CIRCUMFERENCE	71-75	76-79	80-83	84-90	91-97	98-106	107-116	117-126	127-136
4 - HIPS CIRCUMFERENCE	92-96	97-100	101-104	105-110	111-116	117-124	125-132	133-142	143-152

**SIZE GUIDE** **1)** Take the anatomical measurements (body with underwear) without tightening, keeping the measuring tape taut. Note: in case you want to wear of the gowns already with the clothing underneath take the measurements already dressed. **2)** If there is a measure between 2 sizes between the measurements taken, we advise you to take the bigger one. **3)** The measurements in the table are expressed in centimeters.