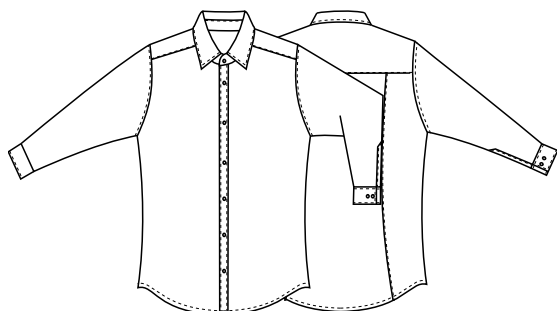


76,5 cm



DETTAGLI

- Collo classico
- Polsino regolabile

TAGLIE

S ÷ 4XL
Slim Fit

COLORE

00 Bianco
000 Nero

TESSUTO

100% poliestere
86 g / m²



Le misure indicate si riferiscono alle taglie **S** per i capi femminili, **L** per i capi maschili. Per i capi a taglia unica le misure indicate sono effettive.

La camicia James dallo stiro facile, è realizzata in **BIONIC-FINISH®** con trattamento antibatterico SILVERPLUS. Silverplus è il trattamento antimicrobico per eccellenza e, grazie ad esso, questo capo garantisce la massima protezione e risulta fresco e igienizzato a lungo, nonostante i lavaggi a bassa temperatura. Inoltre, essendo realizzato interamente in **BIONIC-FINISH®**, è idro-oleo repellente, pur mantenendo un'eccellente traspirabilità, che lo rende adatto ad uso prolungato in qualunque ambiente.

COLORI DISPONIBILI



00 Bianco



000 Nero

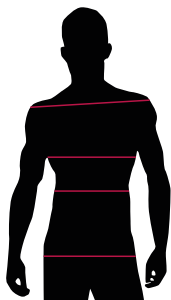
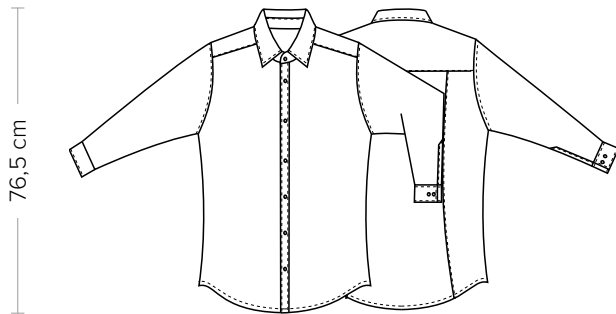
TABELLE TAGLIE
E CORRESPONDENZE1
2
3
4

TABELLA ST-N1 SLIM FIT

TAGLIA	XS	S	M	L	XL	XXL	XXXL	4XL	5XL
1 - SPALLE									
2 - CIRCONFERENZA TORACE	90-94	95-98	99-102	103-106	107-112	113-120	121-128	129-136	137-147
3 - CIRCONFERENZA VITA	81-85	86-89	90-93	94-97	98-104	105-114	115-124	125-134	135-145
4 - CIRCONFERENZA BACINO	93-97	98-101	102-105	106-109	110-115	116-123	124-131	132-139	140-150

GUIDA ALLE TAGLIE **1)** Prendere le misure anatomiche (corpo con abbigliamento intimo) senza stringere mantenendo ben teso il metro. Nota: nel caso vogliate indossare dei camici già con dell'abbigliamento sotto prendete le misure già abbigliati. **2)** Nel caso tra le misure prese vi fosse una misura a cavallo fra 2 taglie vi consigliamo di prendere quella più grande. **3)** Le misure della tabella sono espresse in centimetri.



DETAILS

- Classic collar
- Adjustable cuff

SIZES

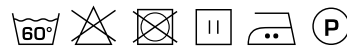
S ÷ 4XL
Slim Fit

COLOURS

00 White
000 Black

FABRIC

100% polyester
86 g / m²



The measures indicated refer to sizes **S** for women, **L** for men. For one-size-fits-all garments, the measurements indicated are effective.

The James shirt – easy ironing – is made of **BIONIC-FINISH®** fabric with SILVERPLUS antibacterial treatment. Silverplus is the antimicrobial treatment par excellence and, thanks to its proprieties, this garment guarantees the utmost protection remaining fresh and sanitised for long, despite continuous washing at low temperatures. Moreover, since it is made of **BIONIC-FINISH®** material, the garment is waterproof and oil-repellent and it maintains excellent breathability, which makes it suitable for prolonged uses in every environment.

AVAILABLE COLOURS



00 White



000 Black

SIZE TABLES AND CORRESPONDENCES

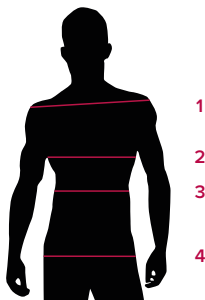


TABLE ST-N1 SLIM FIT									
SIZE	XS	S	M	L	XL	XXL	XXXL	4XL	5XL
1 - SHOULDERS									
2 - CHEST	90-94	95-98	99-102	103-106	107-112	113-120	121-128	129-136	137-147
3 - WAIST	81-85	86-89	90-93	94-97	98-104	105-114	115-124	125-134	135-145
4 - HIPS	93-97	98-101	102-105	106-109	110-115	116-123	124-131	132-139	140-150

SIZE GUIDE **1)** Take the anatomical measurements (body with underwear) without tightening, keeping the measuring tape taut. Note: in case you want to wear of the gowns already with the clothing underneath take the measurements already dressed. **2)** If there is a measure between 2 sizes between the measurements taken, we advise you to take the bigger one. **3)** The measurements in the table are expressed in centimeters.