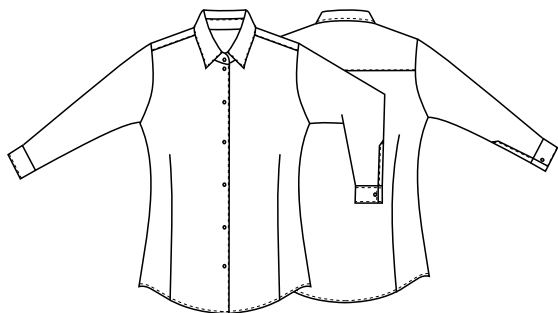


69 cm



## DETTAGLI

- Collo classico

## TAGLIE

XS ÷ XXXL  
Slim Fit

## COLORE

00 Bianco  
000 Nero

## TESSUTO

100% poliestere  
86 g / m<sup>2</sup>

Le misure indicate si riferiscono alle taglie **S** per i capi femminili, **L** per i capi maschili. Per i capi a taglia unica le misure indicate sono effettive.

Classica camicia bianca da donna, realizzata in **BIONIC-FINISH®** con trattamento antibatterico SILVERPLUS. Silverplus è il trattamento antimicrobico per eccellenza e, grazie ad esso, questo capo garantisce la massima protezione e risulta fresco e igienizzato a lungo, nonostante i lavaggi a bassa temperatura. Inoltre, essendo realizzato interamente in **BIONIC-FINISH®**, è idro-oleo repellente, pur mantenendo un'eccellente traspirabilità, che lo rende adatto ad uso prolungato in qualunque ambiente.

## COLORI DISPONIBILI



00 Bianco



000 Nero

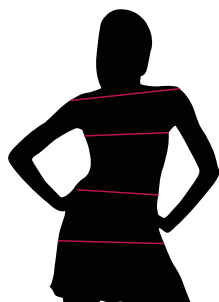
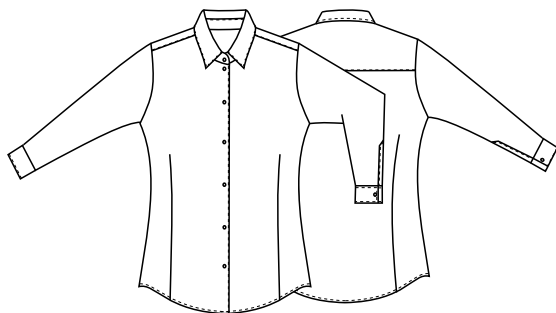
TABELLE TAGLIE  
E CORRISPONDENZE1  
2  
3  
4

TABELLA ST-N2 REGULAR FIT								
TAGLIA	XS	S	M	L	XL	XXL	XXXL	4XL
1 - SPALLE								
2 - CIRCONFERENZA TORACE	83-87	88-91	92-97	98-105	106-113	114-121	122-128	129-134
3 - CIRCONFERENZA VITA	75-79	80-83	84-89	90-97	98-106	107-115	115-124	125-135
4 - CIRCONFERENZA BACINO								

**GUIDA ALLE TAGLIE** **1)** Prendere le misure anatomiche (corpo con abbigliamento intimo) senza stringere mantenendo ben teso il metro. Nota: nel caso vogliate indossare dei camici già con dell'abbigliamento sotto prendete le misure già abbigliati. **2)** Nel caso tra le misure prese vi fosse una misura a cavallo fra 2 taglie vi consigliamo di prendere quella più grande. **3)** Le misure della tabella sono espresse in centimetri.

69 cm



## DETAILS

- Classic collar

## SIZES

XS ÷ XXXL  
Slim Fit

## COLOURS

00 White  
000 Black

## FABRIC

100% polyester  
86 g / m<sup>2</sup>

The measures indicated refer to sizes **S** for women, **L** for men. For one-size-fits-all garments, the measurements indicated are effective.

Classic white blouse for women, made of **BIONIC-FINISH®** fabric with SILVERPLUS antibacterial treatment. Silverplus is the antimicrobial treatment par excellence and, thanks to its proprieties, this garment guarantees the utmost protection remaining fresh and sanitised for long, despite continuous washing at low temperatures. Moreover, since it is made of **BIONIC-FINISH®** material, the garment is waterproof and oil-repellent and it maintains excellent breathability, which makes it suitable for prolonged uses in every environment.

## AVAILABLE COLOURS



00 White



000 Black

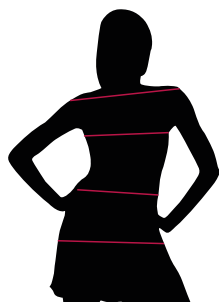
SIZE TABLES  
AND CORRESPONDENCES1  
2  
3  
4

TABLE ST-N2 REGULAR FIT								
SIZE	XS	S	M	L	XL	XXL	XXXL	4XL
1 - SHOULDERS								
2 - CHEST CIRCUMFERENCE	83-87	88-91	92-97	98-105	106-113	114-121	122-128	129-134
3 - WAIST CIRCUMFERENCE	75-79	80-83	84-89	90-97	98-106	107-115	115-124	125-135
4 - HIPS CIRCUMFERENCE								

**SIZE GUIDE** **1)** Take the anatomical measurements (body with underwear) without tightening, keeping the measuring tape taut. Note: in case you want to wear of the gowns already with the clothing underneath take the measurements already dressed. **2)** If there is a measure between 2 sizes between the measurements taken, we advise you to take the bigger one. **3)** The measurements in the table are expressed in centimeters.